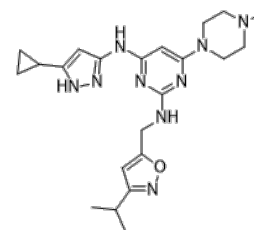


Product Name : XL228
Cat. No. : PC-26878
CAS No. : 898280-07-4
Molecular Formula : C₂₂H₃₁N₉O
Molecular Weight : 437.55
Target : Bcr-Abl
Solubility : 10 mM in DMSO



Biological Activity

XL228 (XL-228) is a potent, multi-targeted tyrosine kinase inhibitor with IC₅₀s of 5, 3.1, 1.6, 6.1, 2 nM for Bcr-Abl, Aurora A, IGF-1R, Src and Lyn, respectively.

References

Noronha G, et al. *Curr Top Med Chem*. 2008;8(10):905-21.

Cortes J, et al. *Blood* 2008 112:3232

Douglas O, et al. *Mol Cancer Ther* 2009;8(12 Suppl):C192.

Caution: Product has not been fully validated for medical applications. Lab Use Only!

E-mail: tech@probechem.com